

# Hanukkah

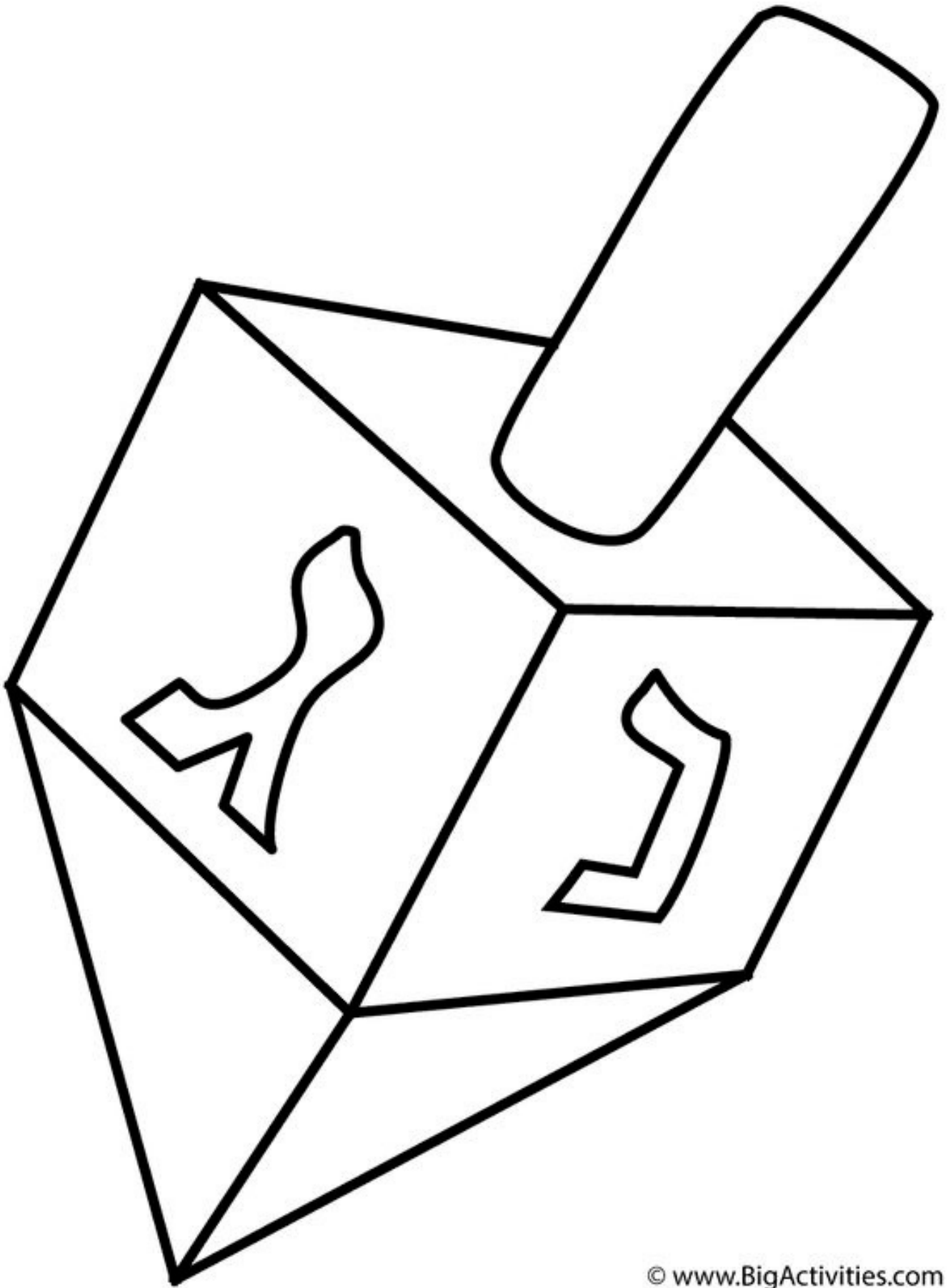
*Coloring, games and crafts*

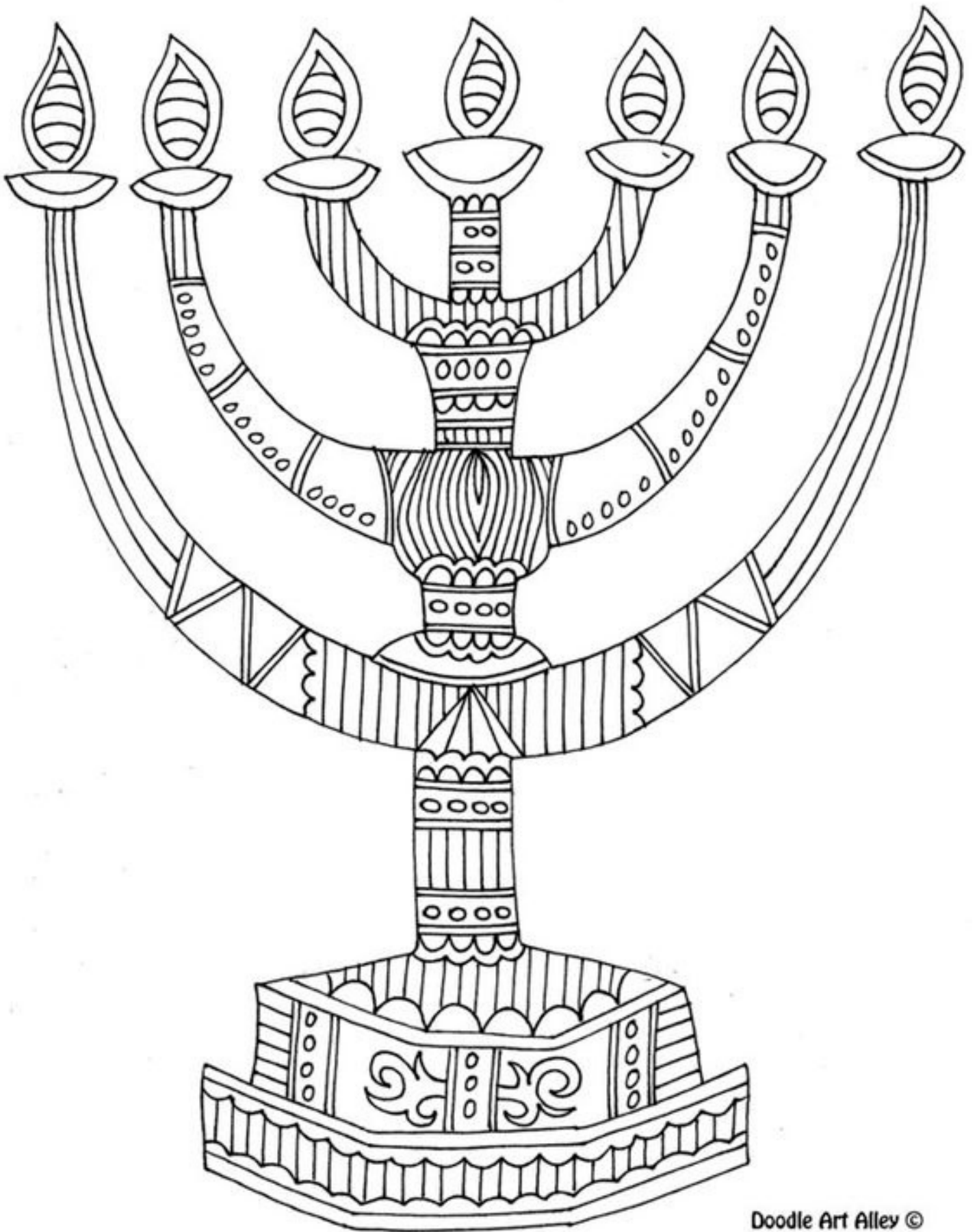




HAPPY  
HANUKKAH!







Name: \_\_\_\_\_

# Hanukkah Word Search

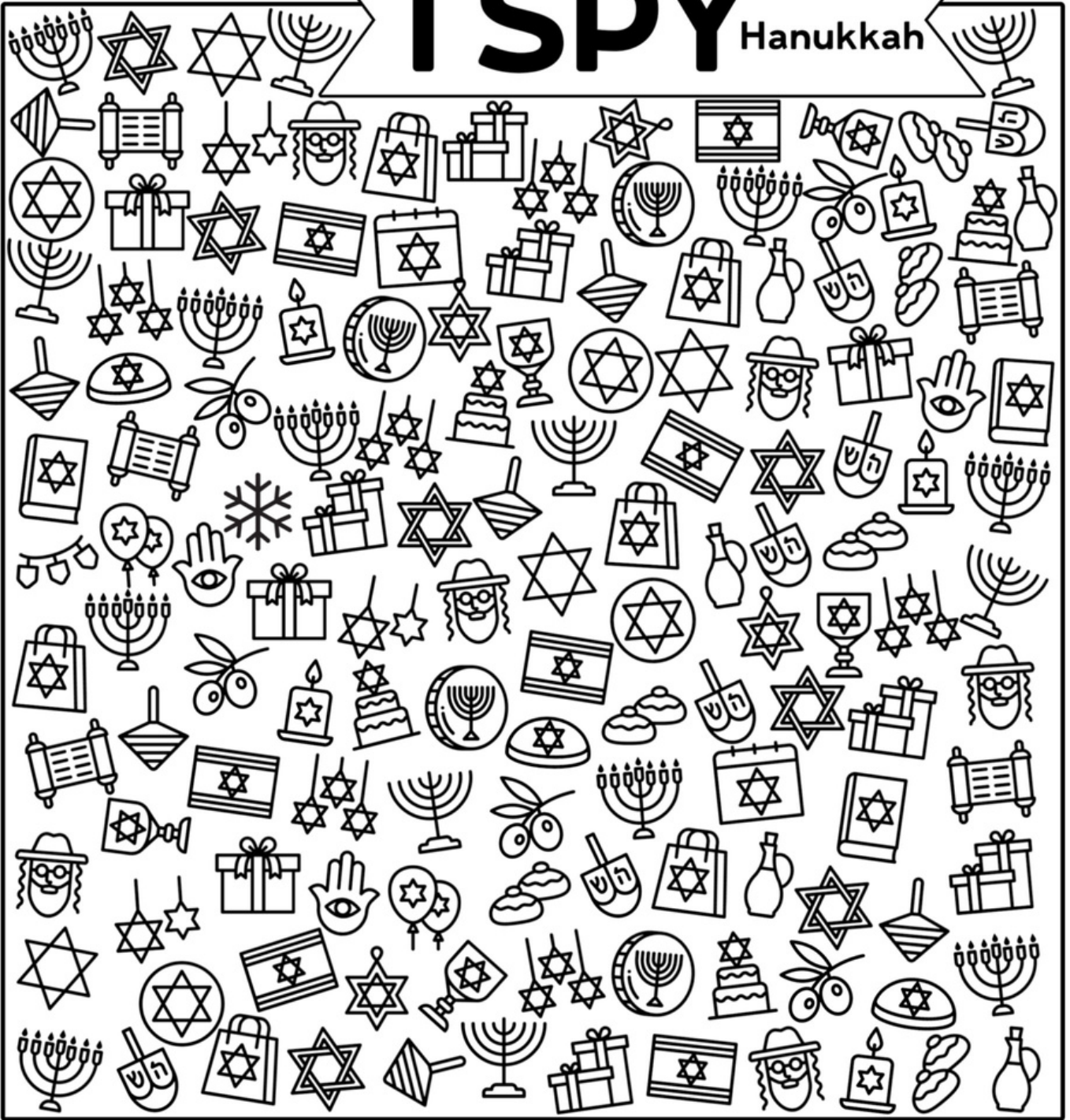


MENORAH  
HANUKKAH  
DREIDEL  
CELEBRATE  
FAMILY

GIFTS  
GELT  
CANDLES  
COINS  
OIL

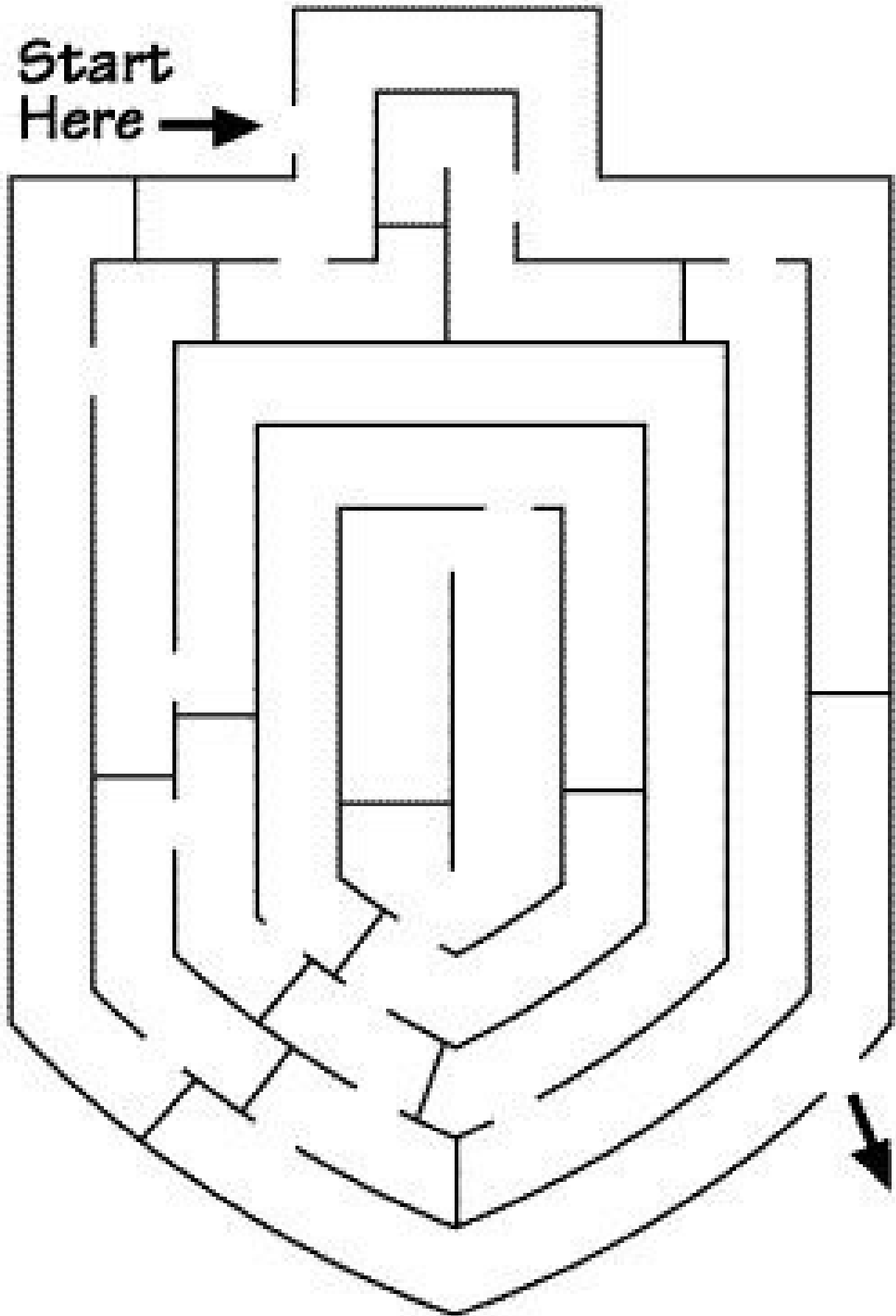
FESTIVAL  
EIGHT  
REDEDICATION  
SHAMASH  
GIMEL

# I SPY Hanukkah

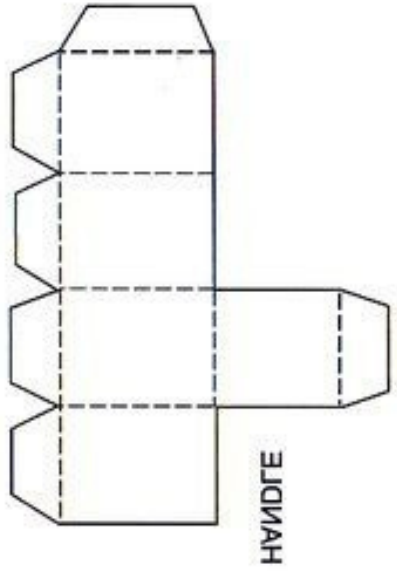
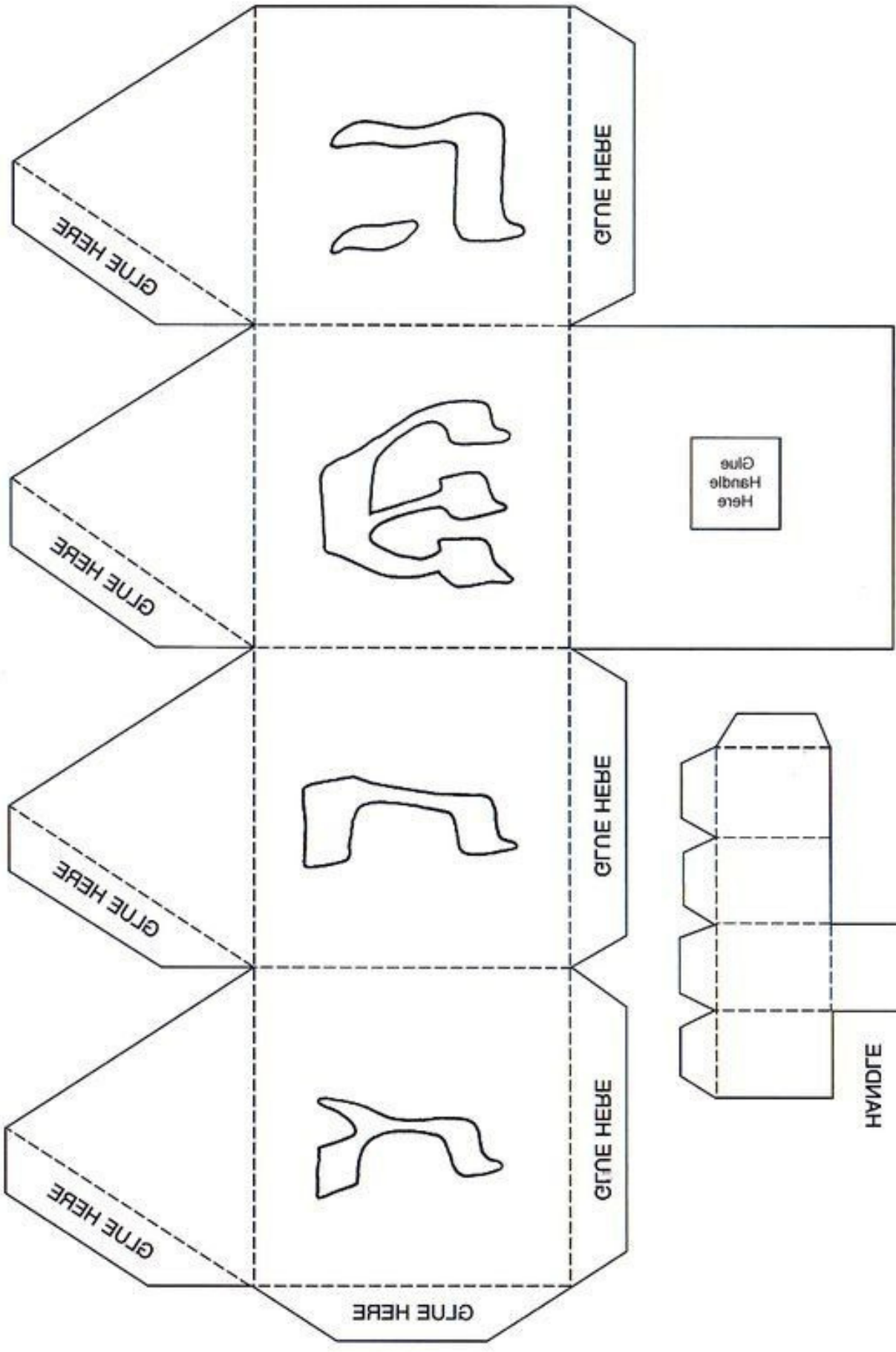


- |   |  |   |  |   |  |   |  |   |  |   |  |   |  |   |  |   |  |   |  |
|---|--|---|--|---|--|---|--|---|--|---|--|---|--|---|--|---|--|---|--|
| 2 |  | 4 |  | 4 |  | 5 |  | 4 |  | 5 |  | 7 |  | 4 |  | 6 |  | 5 |  |
| 1 |  | 6 |  | 7 |  | 1 |  | 3 |  | 6 |  | 7 |  | 4 |  | 7 |  | 5 |  |
| 3 |  | 3 |  | 4 |  | 6 |  | 2 |  | 7 |  | 5 |  | 9 |  | 6 |  | 3 |  |

Start  
Here







# How to Play Dreidel

## Supplies:

Dreidel

At least 10 tokens per player  
(tokens can be any small  
item – dried beans, chocolate  
coins, pennies, etc.)



To set up, distribute the tokens evenly among the players.

Arrange yourselves in a circle. Have each player put one of their tokens into the center – the “pot.”

Now take turns spinning the dreidel. When it lands, the letter facing up will tell the player what to do:



**Nun: Nothing.** Don't take from or add to the pot.



**Gimmel: All.** Take all of the tokens from the pot.



**Hay: Half out.** Take half of the tokens from the pot.



**Shin: One in.** Add one token to the pot.



Anytime the pot is emptied, each player puts one token back in before the next person spins. As players run out of tokens, they're out – and the last person remaining is the winner!